

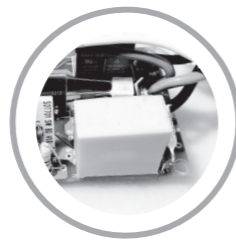
HOW IT WORKS

The TrickleStar 7-Outlet Advanced PowerStrip works on a simple control/switched basis. When the TV or PC is plugged into the control outlet and turned on, the switched outlets will turn on and items plugged into them can be used. When the TV or PC is turned off, the items in the switched outlets will turn off and no longer draw any standby power.

The easiest way to think of it is that the device in the control outlet *controls* the switched outlets.

Device in control outlet on = switched outlets on
 Device in control outlet off = switched outlets off

PREMIUM FIREPROOF SURGE PROTECTION



Traditional surge suppression products use standard Metal Oxide Varistors (MOVs). The TrickleStar 7-Outlet Advanced PowerStrip (APS) uses ceramic-encased MOVs, which suppress more energy and dissipate heat faster than traditional MOVs. This makes the APS fireproof during most surges.



INSTALLATION REQUIREMENT

The Advanced PowerStrip (APS) must be plugged into a grounded outlet for surge protection to operate correctly. Use of an extension cord, adaptor or other power strip in conjunction with the APS will void all warranties.

PRODUCT OVERVIEW

<p>Ground LED Indicator</p>	<p>When illuminated, it indicates that the APS is properly grounded.</p> <p>If this is not illuminated, there is a grounding problem and you should contact an electrician. Connecting the APS to an improperly grounded wall outlet will void all warranties.</p>
<p>Surge LED Indicator</p>	<p>When illuminated, it indicates that the surge protection is functioning normally.</p> <p>If this LED does not illuminate, it indicates that the surge protection function has been damaged while protecting your devices, and the product must be replaced.</p>
<p>Switched LED Indicator</p>	<p>When lit, it indicates that the switched outlets have power and the devices plugged into them can be used.</p>
<p>Resettable Circuit Breaker</p>	<p>If no devices are powered or LEDs lit, press the circuit breaker to activate power.</p>
<p>Always On Outlets</p>	<p>The always-on outlets function like a regular outlet and have power all the time. Devices that require continuous power should be plugged into them.</p>
<p>Switched Outlets</p>	<p>The switched outlets will have power when the device plugged into the control outlet is turned on. When the device in the control outlet is turned off, the items in the switched outlets will turn off.</p>

FOR TECHNICAL SUPPORT

Toll free : 1-888-700-1098
www.tricklestar.com

<p>Threshold Switch</p>	<p>Adjust the threshold switch based on the device plugged into the control outlet.</p> <table border="1"> <tr> <td>TV</td> <td>Tube/CRT TV LED/LCD TV 50" or Larger LED/LCD TV Less than 50"</td> <td>High High Med</td> </tr> <tr> <td>PC</td> <td>Desktop Laptop</td> <td>High Low</td> </tr> </table>	TV	Tube/CRT TV LED/LCD TV 50" or Larger LED/LCD TV Less than 50"	High High Med	PC	Desktop Laptop	High Low
TV	Tube/CRT TV LED/LCD TV 50" or Larger LED/LCD TV Less than 50"	High High Med					
PC	Desktop Laptop	High Low					

10-YEAR PRODUCT LIFETIME WARRANTY

The Product Warranty is 10 years (hereafter referred to as Product Warranty).

TrickleStar warrants to the original purchaser that for the Product Warranty, it shall be free of defects in design, assembly, material, or workmanship, and will repair or replace, at its option, any defective product free of charge.

CONNECTED DEVICE WARRANTY

TrickleStar will repair or replace, at its option, any devices which are damaged by a transient voltage surge/spike or lightning strike, (an "Occurrence"), while properly connected through the Product to a properly wired AC power line with protective grounding.

If applicable; the telephone line, and/or network line must be properly connected and installed, and the antenna cable line must also be properly connected and installed, as determined by TrickleStar at its sole discretion.

This Connected Device Warranty is a Limited Warranty, subject to the limitations and exclusions set forth herein. TrickleStar will repair or replace the damaged connected devices, at TrickleStar's option, an amount equal to the fair market value of the damaged devices or the original purchase price of the devices, whichever is less, up to the maximum of \$20,000.

The fair market value of the devices shall be the current value of the devices specified in the most recent edition of the Orion Blue Book online by UsedPrice.com.



TrickleStar reserves the right to review the damaged Product, the damaged devices, and the site where the damage occurred. All costs of shipping the Product and the damaged devices to TrickleStar for inspection shall be borne solely by the purchaser. TrickleStar reserves the right to negotiate the cost of repairs. If TrickleStar determines, in its sole discretion, that it is impractical to ship the damaged devices to TrickleStar, TrickleStar may designate, in its sole discretion, a repair facility to inspect and estimate the cost to repair such devices. The cost, if any, of shipping the devices to and from such repair facility and of such estimate shall be borne solely by the purchaser.

Damaged devices must remain available for inspection until the claim is finalized. Whenever claims are settled, TrickleStar reserves the right to be subrogated under any existing insurance policies the claimant may have. All above warranties are null and void if:

- The Product in use during the occurrence is not provided to TrickleStar for inspection upon TrickleStar's request at the sole expense of the purchaser.
- TrickleStar determines that the Product has not been installed in accordance with the installation requirement, altered in any way or tampered with.
- TrickleStar determines that the damage did not result from the occurrence or that no occurrence in fact took place, the repair or replacement of the damaged devices is covered under a manufacturer's warranty.
- TrickleStar determines that the connected devices were not used under normal operating conditions or in accordance with any labels or instructions.
- The Product is not plugged directly into a receptacle.
- The Product is "daisy-chained" together in serial fashion with other power boards, UPS', other surge protectors or extension cords.
- A three- to two-prong adapter is used.
- The Product is not used indoors.

This Product is not for use with aquariums and all other water-related products. Use only indoors and in dry locations.

The Connected Device Warranty only protects against damage to properly connected devices where TrickleStar has determined, in its sole discretion, that the damage resulted from an occurrence, and does not protect against acts of God (other than lightning) such as flood, earthquake, war, vandalism, theft, normal-use wear and tear, erosion, depletion, obsolescence, abuse, damage due to low voltage disturbances (i.e. brownouts or sags), non-authorized program, or system devices modification or alteration.

This warranty contains the sole warranty of TrickleStar, there are no other warranties, expressed or, except as required by law, implied, including the implied warranty or condition of quality, merchantability or fitness for a particular purpose, and such implied warranties, if any, are limited in

duration to the term of this warranty. Some states do not allow limitations on how long an implied warranty lasts, so the above limitations may not apply to you.

In no event shall TrickleStar be liable for incidental, special, direct, indirect, consequential or multiple damages such as, but not limited to, lost business or profits arising out of the sale or use of any Product, even if advised of the possibility of such damages. This warranty gives you specific legal rights, and you may also have other rights, which may vary from state to state. Some states do not allow the exclusion or limitation of incidental or consequential damage, so the above limitations may not apply to you.

This warranty is valid only for the original purchaser of the product. All damage claims against the product must be made within 30 days from the date of the occurrence and must be accompanied by a receipt for the damaged devices or the warranty is void.

Warranty is valid in United States and Canada.

MAKING A WARRANTY CLAIM

Go to: www.tricklestar.com and print our claim form and email it to warranty@tricklestar.com

Provide the following information:

- Product part number of the Product.
- A list of the devices that was connected to the Product at the time of the occurrence.
- A list of the devices that were damaged during the occurrence and the extent of the damage.
- The date of the occurrence.
- Where you purchased the Product.
- When you purchased the Product.
- A copy of original receipt.

A customer service representative will then instruct you on how to forward your devices, receipt and Product in use during the "occurrence" and how to proceed with your claim.



COPYRIGHT & DISCLAIMER

© 2020 TrickleStar Inc. All rights reserved.

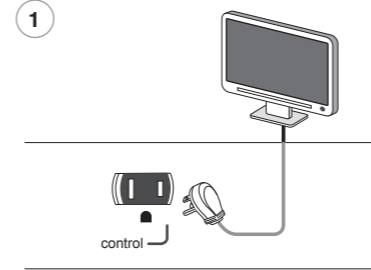
TrickleStar® is a registered trademark of TrickleStar.

Any typographical, clerical or other error or omission in this document or other documents or information issued by TrickleStar shall be subject to correction without any liability on the part of TrickleStar without notice.

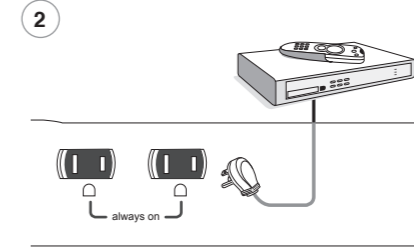
www.tricklestar.com



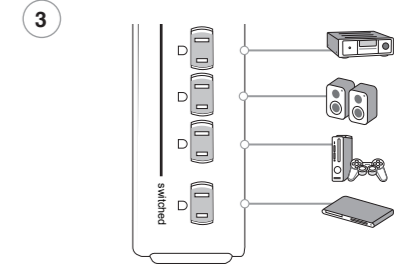
TV Set Up



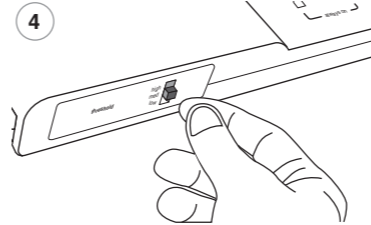
1 Plug the TV into the outlet labeled "control."



2 Plug in electronics requiring continuous power, such as a cable box and DVR, into the outlets labeled "always on."



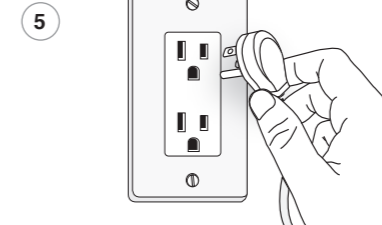
3 Plug TV peripherals, such as a DVD player, speakers, or receiver, into the outlets labeled "switched."



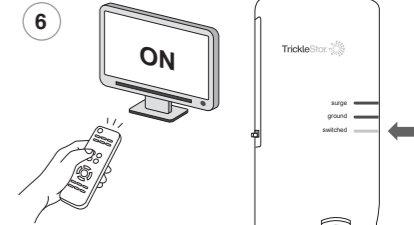
4 Adjust the threshold switch to the suggested setting based on the device plugged into the control outlet.

Tube/CRT TV	High
LCD/LED 50" or Larger	High
LCD/LED Less than 50"	Med

Note: If you turn on your TV and the switched outlets don't turn on, turn everything off and adjust the threshold switch to a lower setting.



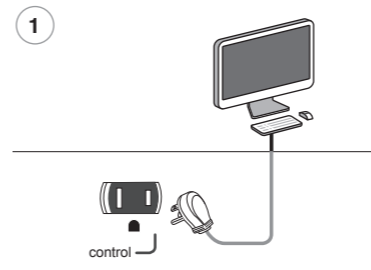
5 Plug the power strip into a grounded outlet.



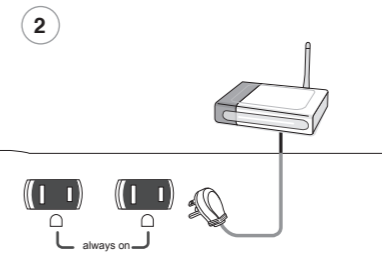
6 Turn the TV on. Within a few seconds, the switched outlets will have power and the devices plugged into them and can be used.

Note: You'll know the switched outlets have power when the green "switched" LED at the top of the power strip is lit.

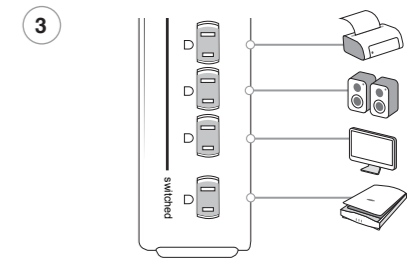
PC Set Up



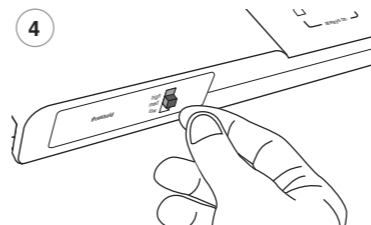
1 Plug the computer into the outlet labeled "control."



2 Plug in electronics requiring continuous power, such as a router and modem, into the outlets labeled "always on."



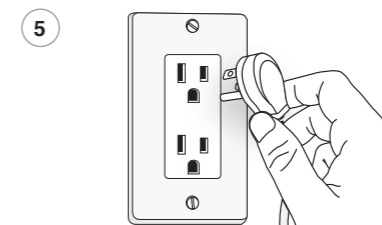
3 Plug any peripheral electronics, such as a monitor, speakers, or printer, into the outlets labeled "switched."



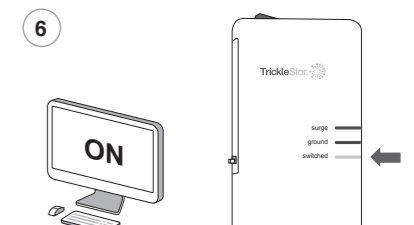
4 Adjust the threshold switch to the suggested setting based on the device you plug into the control outlet.

Desktop	High
Laptop	Low

Note: If you turn on your computer and the switched outlets don't turn on, turn everything off and adjust the threshold switch to a lower setting.



5 Plug the power strip into a grounded outlet.



6 Turn the computer on. Within a few seconds, the switched outlets will have power and the devices plugged into them and can be used.

Note: You'll know the switched outlets have power when the green "switched" LED at the top of the power strip is lit.